

Literacy Improvement Action Plan - 2024



Our Goal

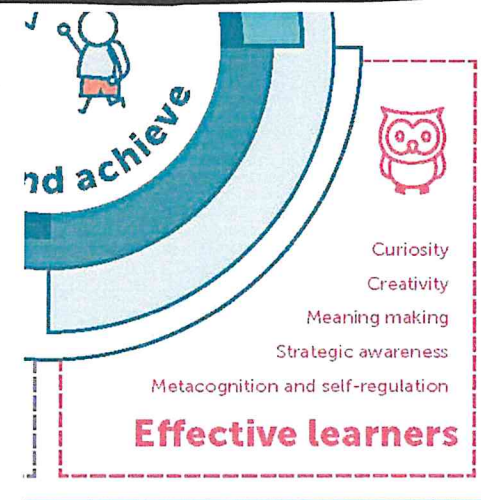
At Bute Early Learning and Primary School, our goal is for all students to become effective learners with a strong foundation in fundamental Literacy capabilities; namely **reading**, **spelling** and **writing**.

OUR Actions

- We will implement the Playberry-Laser teaching and learning practices, with **FIDELITY**.
- We will **ADHERE** to the Playberry-Laser Teaching and Learning Scope and Sequence, informed by the initial student placement assessment.
- We will **COLLECT, ANALYSE** and **RESPOND** to the learner data presented within the Playberry-Laser assessment schedule.
- We will create a culture of **RESPONSIVE TEACHING**, through strategic processes for **CHECKING FOR STUDENT UNDERSTANDING** and making small **COURSE-CORRECTIONS** to our teaching as we go.

Challenge of Practice

If all teachers implement the Playberry-Laser teaching and learning practices, in conjunction with the Playberry-Laser Scope and Sequence, then all students will demonstrate growth in their reading, spelling and writing knowledge, skills and abilities.



Our Targets

- **Receptions:** 7/10 students will achieve a DIBELS composite score between 420-449 by EOY.
- **Year 1:** 3/3 students will achieve the SEA (28/40 or more) in the Year 1 Phonics Screening Check (PSC).
 - 3/3 students will achieve a DIBELS composite score between 441-479 by EOY.
- **Year 2:** 3/4 students will achieve a DIBELS composite score between 439-473 by EOY.
- **Year 3:** 1/2 students will achieve a DIBELS composite score between 442-466 by EOY.
- **Year 4:** 3/4 students will achieve a DIBELS composite score between 442-460 by EOY.
- **Year 5:** 1/2 students will achieve a DIBELS composite score between 449-468 by EOY.
- **Year 6:** 4/6 students will achieve a DIBELS composite score between 435-453 by EOY.

Resources

- Playberry-Laser Professional Development
- Playberry-Laser Teaching and Learning Scope and Sequence
- Playberry-Laser online platform (Teaching and Learning resources)
- Playberry-Laser Expert Demonstration Lessons
- Dedicated Staff Meeting time to critically reflecting on the Playberry-Laser program
- Ongoing, in-class coaching / modelling
- DIBELS Assessments
- Phonemic Awareness Curriculum and Assessments (Hegerty)

Numeracy Improvement Action Plan - 2024

Our Goal

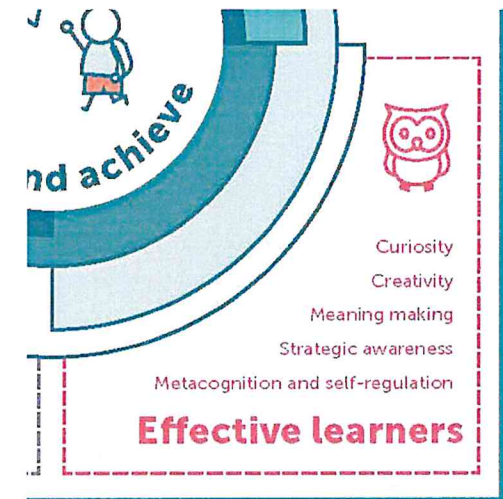
At Bute Early Learning and Primary School, our goal is for all students to become effective learners with a **strong foundation in Number and Place Value knowledge, skills and capabilities.**

OUR Actions

- We will ensure all students are engaged in daily **NUMBER TALKS** to increase students' math **CONFIDENCE** and help them build **FLEXIBILITY** and **STRATEGIC THINKING**.
- We will use Essential Assessment to **PRE-ASSESS** student understanding, **IDENTIFYING MISUNDERSTOOD CONCEPTS** and **NEXT TEACHING AND LEARNING STEPS**.
- We will use Essential Assessment to **POST-ASSESS** students to determine **GROWTH**.
- We will create a culture of **RESPONSIVE TEACHING**, through strategic processes for **CHECKING FOR STUDENT UNDERSTANDING** and making small **COURSE-CORRECTIONS** to our teaching as we go.

Challenge of Practice

If all teachers design learning within the Mathematics Learning Area at the appropriate level of the curriculum, through evidenced-based practices and through the proficiencies, then students will develop their knowledge, skills and abilities in Number and Place value.



Our Targets

- **All students** will demonstrate 12 months growth within the Number and Algebra Strand, as measured through Essential Assessment
- **All students** will demonstrate a consolidation rate of 85% or higher for misunderstood concepts, incorporated in individual "My Numeracy" Platforms

Resources

- PD - Number Talks in the classroom: How? Why? Ways to do it! (Shelley Gray Teaching)
- Daily Number Talks resource
- Dedicated Staff Meeting time to critically reflect on student data from Essential Assessment
- Ongoing, in-class coaching / modelling
- Essential Assessment platform



Site Improvement Plan Endorsements - 2024



Principal:

A handwritten signature in black ink, appearing to be 'J. White', written over a horizontal line.

Date:

19/2/2024

Governing
Council
Chairperson:

A handwritten signature in black ink, appearing to be 'C. Smith', written over a horizontal line.

Date:

19/2/2024

Education
Director:

A handwritten signature in blue ink, appearing to be 'J. White', written over a horizontal line.

Date:

22/2/2024

A large, stylized handwritten signature in red ink, appearing to be 'Cle', located in the bottom right corner of the page.

OUR STRATEGY FOR PUBLIC EDUCATION



Government of South Australia
Department for Education

CHILDREN AND STUDENTS LEARNING AND THRIVING

OUR PURPOSE

Public education is for every child and young person in every community across our state.

Educators and staff work in partnership with families and communities to nurture, develop and empower all South Australian children and young people with the knowledge, skills and capabilities they need to become fulfilled individuals, active, compassionate citizens and lifelong learners.

Our preschools and schools are the heart of local communities. They are safe, inclusive, and collaborative – a place where every child and young person is encouraged to contribute, develops positive relationships, has a say in their learning, and where their needs, interests and cultures are recognised and supported.

We are relentless in our ambition for all children and young people to enter the world beyond the classroom ready to learn and to create opportunities to live a satisfying and fulfilling life of their choosing.

When our children and young people thrive so does South Australia.



LEVERS FOR IMPACT



AREAS OF IMPACT



Engaging children and young people

Improvement and responsibility

We will use success measures aligned to our areas of impact to guide our understanding of how our public education strategy is tracking.



GUIDING PRINCIPLES

