

2025 annual report to the Community

Bute Early Learning & Primary School and Bute and District Kindergarten

Bute Early Learning & Primary School number: 702

Bute and District Kindergarten number: 6604

Partnership: Northern Yorke



School principal:

Richard Hall

Signature

Date of endorsement:

17/03/2026



Government
of South Australia
Department for Education

Context Statement

Bute Early Learning and Primary School caters for students from R-6. At the time of this report, the enrolment in 2025 is 34. Bute Early Learning and Primary School is classified as Category 6 on the Department for Education Index of Educational Disadvantage. At the time of this report, the school population includes 3% Aboriginal students, 6% students with disabilities, 3% children/young people in care. Further information about the school is available on the school's website (including its context statement), as well as the My School website.

Information about Bute and District Kindergarten is available on the centres website, as well as the Australian Childrens Education and Care Quality Authority (ACECQA) website.

Data Source: Department for Education data holdings from Mid census captured in AUGUST 2025.

Governing Council Report

Bute Early Learning and Primary Governing Council Chairperson's Report – 2025

2025 was a year of learning, not just for the students but me as a first term chairman. I thank Mr Hall, the staff, students and the governing council for their support.

It is my opinion that our students are offered tremendous support and opportunities with a well-rounded education.

Strong Rural care and stable school numbers

It is pleasing to visit rural care to collect my children and seeing a vibrant childcare. The grounds are presented beautifully and the children appear safe and happy. The constant renewal of infrastructure is pleasing.

More children starting reception than finished their journey in year 6 is a nice position to be in

Staff and Learning

I value the leadership and stability that is delivered to our students and families. The efforts of all contributors to our school are something to be proud of.

Exciting Events and Community Spirit

The year was punctuated with major events, sports day with Pt Broughton and Snowtown, Kernewek Lowender, Japanese festival and school camp. School funrun, first responders day

+ varied activities joining with other schools: MP St Mary MacKillop's annual dance concert.

The activation of Parent Group, with special acknowledge of Hannah's leadership is a real asset for the school. Congratulations to all the fundraisers

Looking Ahead

As we look to 2026, we are excited about continuing to build on the strong foundation we have established. With good enrolments, innovative programs, and a united school community, Bute Early Learning and Primary is in a fantastic position to continue providing exceptional education and opportunities for all our students.

Thank You

Finally, I'd like to extend my heartfelt thanks to our amazing staff, supportive parents, and the wider community for your dedication and involvement throughout the year. It is through this collective effort that we have created a positive, inclusive, and thriving school environment.

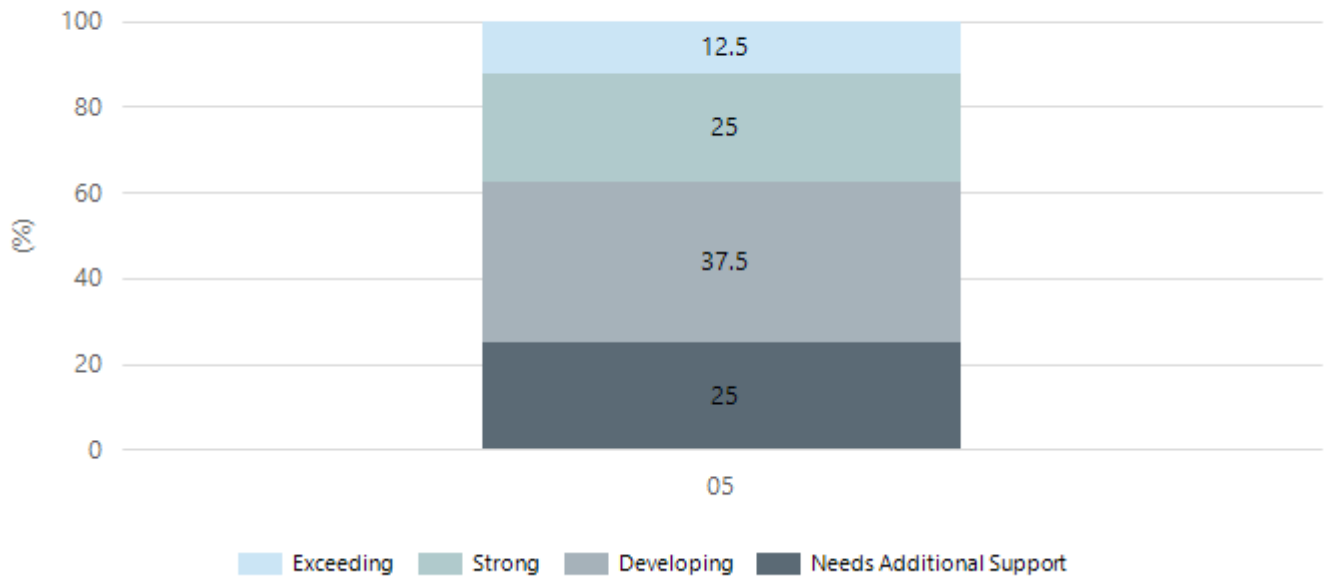
Tom Michael

Performance Summary

NAPLAN Proficiency

In 2023 the Australian Curriculum, Assessment and Reporting Authority (ACARA) - a Commonwealth Independent statutory authority - announced changes to NAPLAN performance reporting. The new approach replaces the previous numerical NAPLAN bands and the national minimum standard.

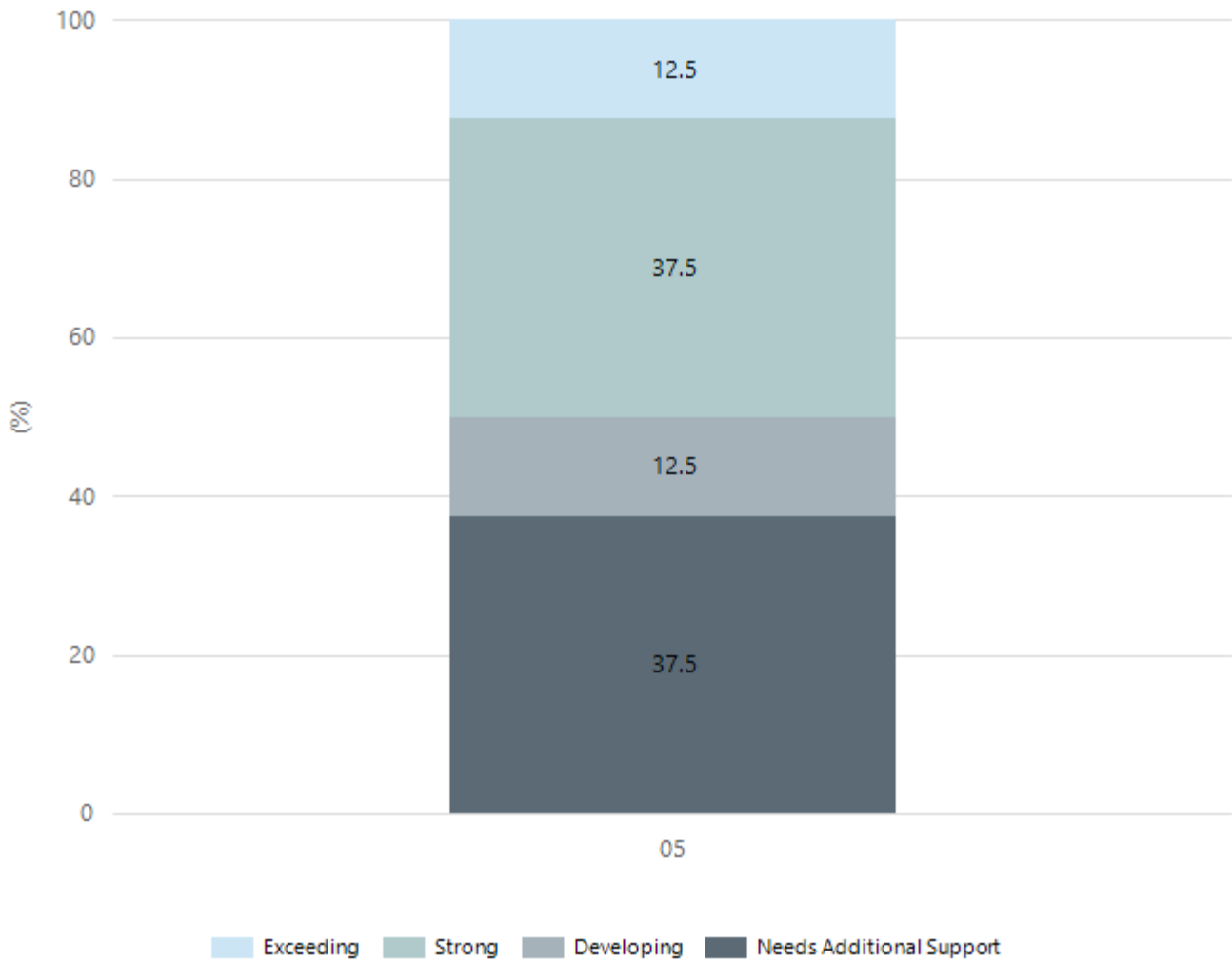
Numeracy



| | |
|--------------------------|----|
| Year Level | 05 |
| Exceeding | 1 |
| Strong | 2 |
| Developing | 3 |
| Needs Additional Support | 2 |
| Total | 8 |

Data Source: Department for Education Assessment Data Holdings, 2025. If there are less than 6 students who sat NAPLAN in a school, no information will be shown. If a year level has less than 6 students, that year level will not be shown in NAPLAN results.

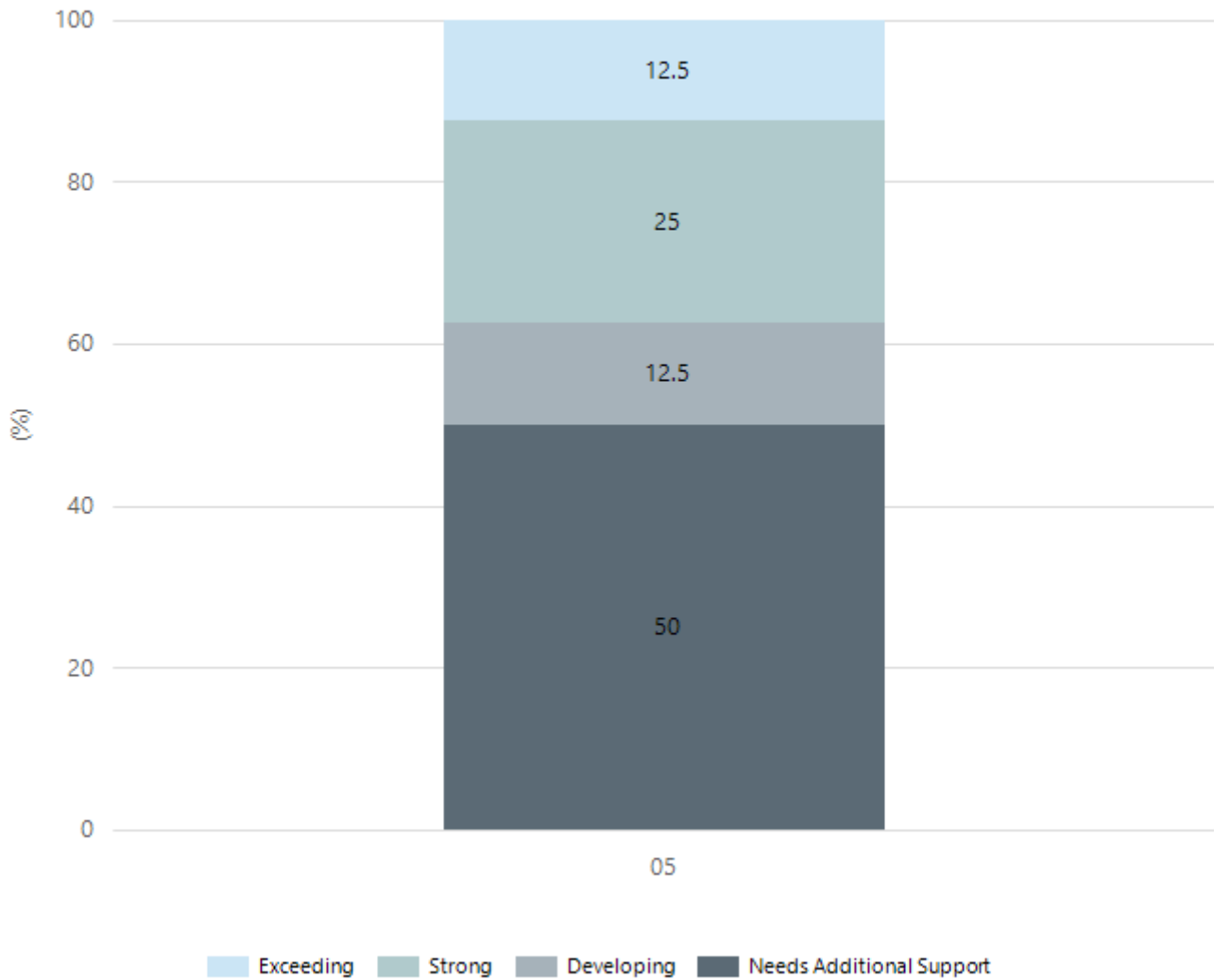
Reading



| | |
|--------------------------|----|
| Year Level | 05 |
| Exceeding | 1 |
| Strong | 3 |
| Developing | 1 |
| Needs Additional Support | 3 |
| Total | 8 |

Data Source: Department for Education Assessment Data Holdings, 2025. If there are less than 6 students who sat NAPLAN in a school, no information will be shown. If a year level has less than 6 students, that year level will not be shown in NAPLAN results.

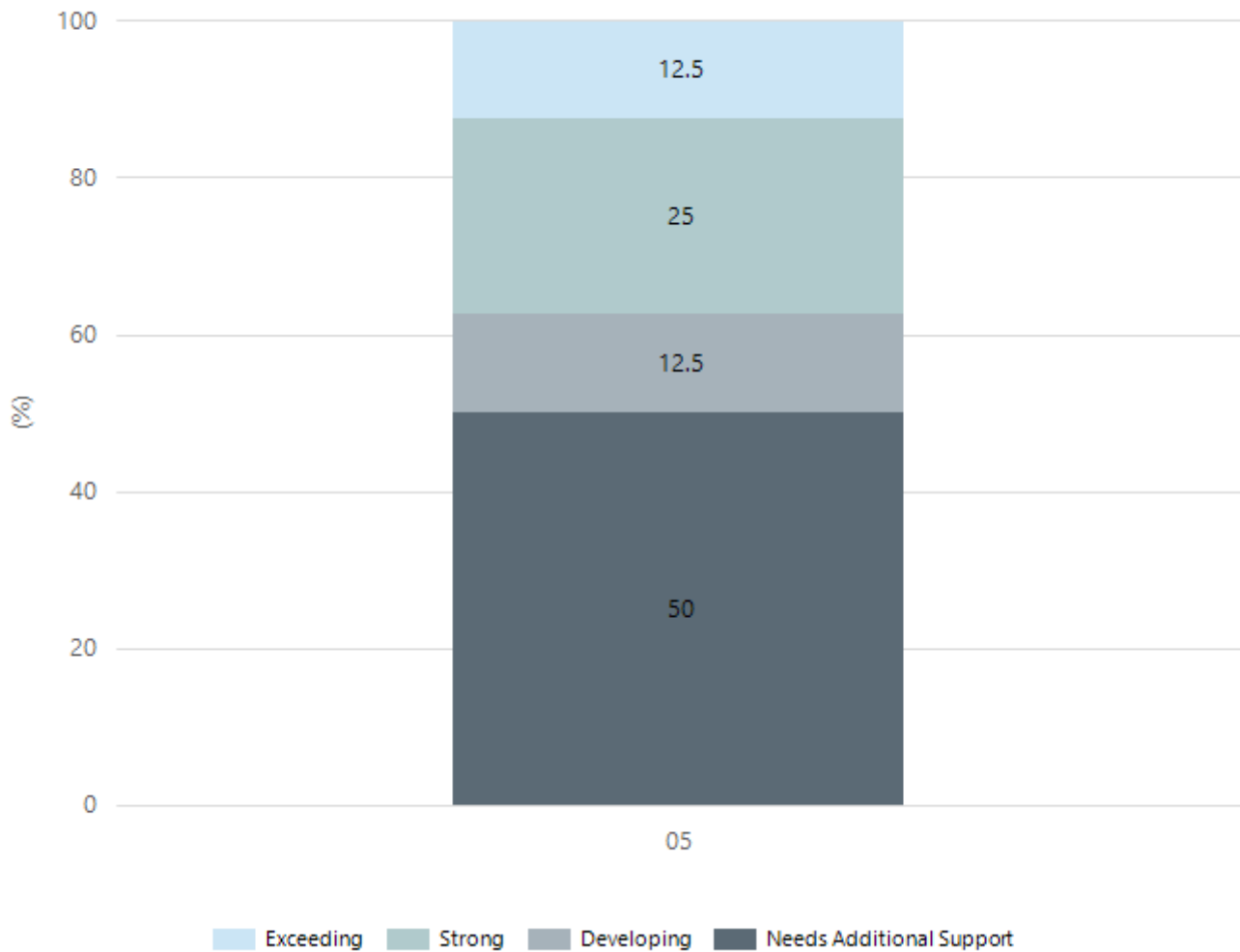
Writing



| | |
|--------------------------|----|
| Year Level | 05 |
| Exceeding | 1 |
| Strong | 2 |
| Developing | 1 |
| Needs Additional Support | 4 |
| Total | 8 |

Data Source: Department for Education Assessment Data Holdings, 2025. If there are less than 6 students who sat NAPLAN in a school, no information will be shown. If a year level has less than 6 students, that year level will not be shown in NAPLAN results.

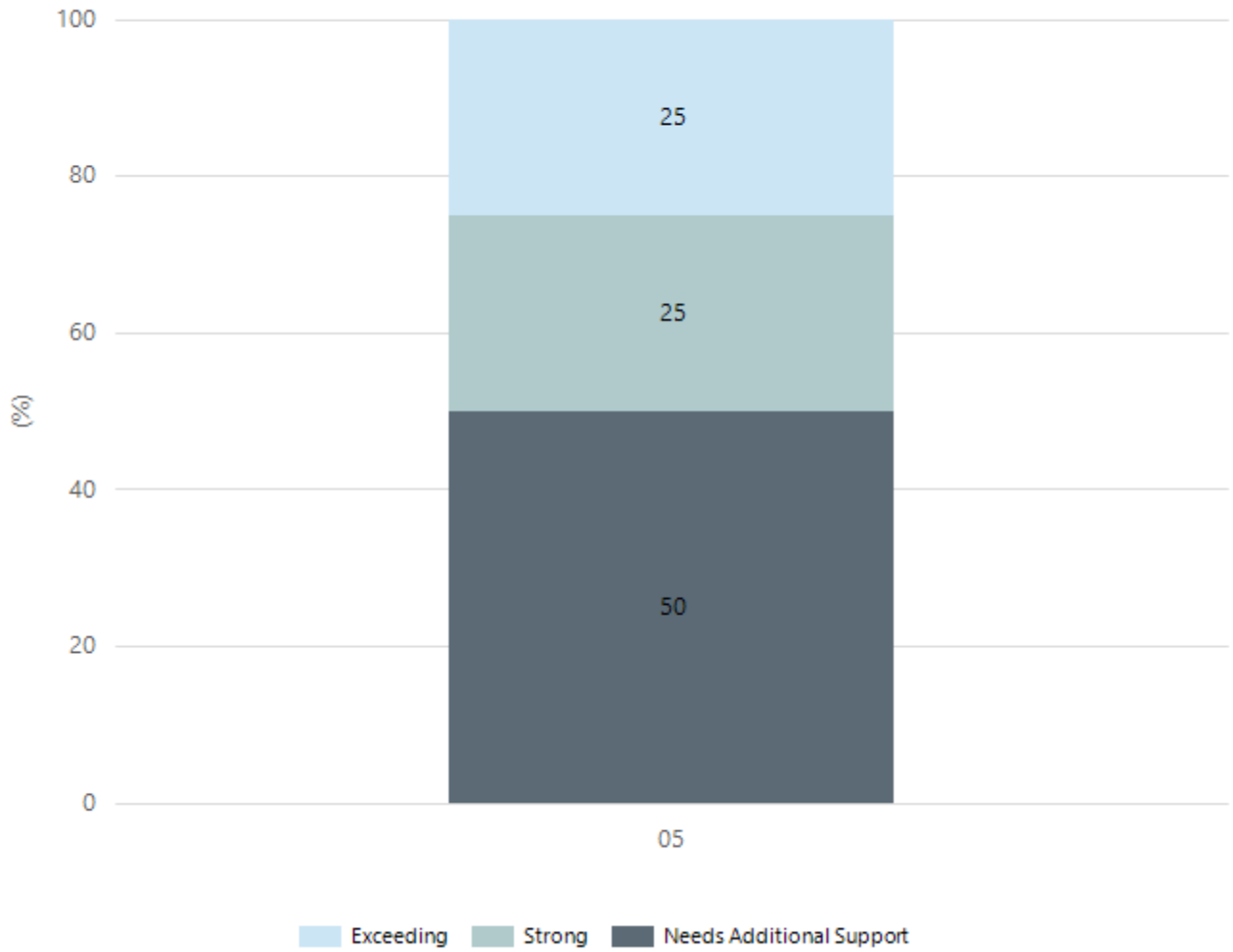
Grammar



| | |
|--------------------------|----|
| Year Level | 05 |
| Exceeding | 1 |
| Strong | 2 |
| Developing | 1 |
| Needs Additional Support | 4 |
| Total | 8 |

Data Source: Department for Education Assessment Data Holdings, 2025. If there are less than 6 students who sat NAPLAN in a school, no information will be shown. If a year level has less than 6 students, that year level will not be shown in NAPLAN results.

Spelling



| | |
|--------------------------|----|
| Year Level | 05 |
| Exceeding | 2 |
| Strong | 2 |
| Needs Additional Support | 4 |
| Total | 8 |

Data Source: Department for Education Assessment Data Holdings, 2025. If there are less than 6 students who sat NAPLAN in a school, no information will be shown. If a year level has less than 6 students, that year level will not be shown in NAPLAN results.

Preschool Attendance

| | Term 1 | Term 3 |
|-------------|--------|--------|
| 2022 centre | 90% | 88.7% |
| 2023 centre | 91.7% | 84.4% |
| 2024 centre | 85.7% | 84% |
| 2025 centre | 90.6% | 80.8% |

Based on preschool sessions attended during a two-week reference period in Term 1 and Term 3. The table represents the proportion of hours attended out of total hours enrolled (booked). Data Source: Department for Education attendance data.

School Attendance

| Year Level | 2023 | 2024 | 2025 |
|------------|-------|-------|-------|
| Reception | 86.0% | 88.4% | 92.9% |
| Year 01 | 90.6% | 88.2% | 88.6% |
| Year 02 | 94.6% | 92.1% | 87.0% |
| Year 03 | 86.0% | 96.8% | 88.9% |
| Year 04 | 86.6% | 94.1% | 91.9% |
| Year 05 | 95.3% | 94.3% | 92.0% |
| Year 06 | 93.6% | 95.8% | 91.4% |
| Total | 89.7% | 92.0% | 90.2% |

Data Source: Department for Education Attendance Data, Semester 1 Report 2025. A blank cell indicates there were no students enrolled. 'Primary Other' includes students enrolled in specialised education options. 'Secondary Other' includes students who have already spent a year at Year 12 and elected to undertake further study at Year 12.

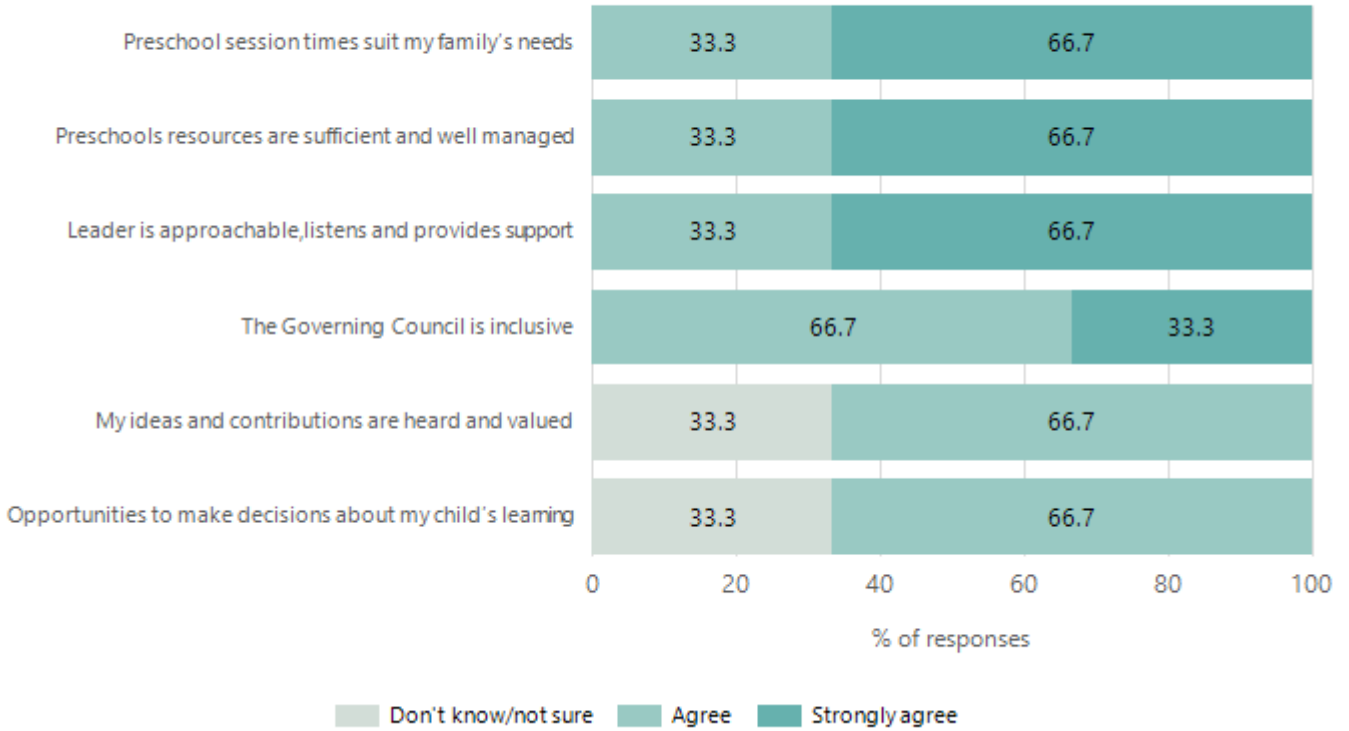
Attendance Comment

In South Australia, preschool attendance is not compulsory, but it is strongly encouraged. Preschool gives children the best opportunity to develop skills, which prepare them for school. These benefits include establishing positive routines and habits, friendships and connections as well as developing communication, problem-solving and creative skills.

In South Australia, all children and young people must be in school from 6 years to 16 years old. They must attend a government or non-government school full time. From age 16 to 17 however, young people must attend school or an approved learning program (such as an apprenticeship, traineeship, accredited course or university). Schools and parents must encourage and support students to come to school every day. Parents and caregivers must make sure their child is enrolled in a school, and attends school all day and everyday it is open, unless a child is sick or has an approved exemption. Teachers and leaders actively follow up when a student misses school, including recording all absences and non-attendance. All schools in South Australia have local attendance procedures governed under the Education and Children's Services Regulations 2020.

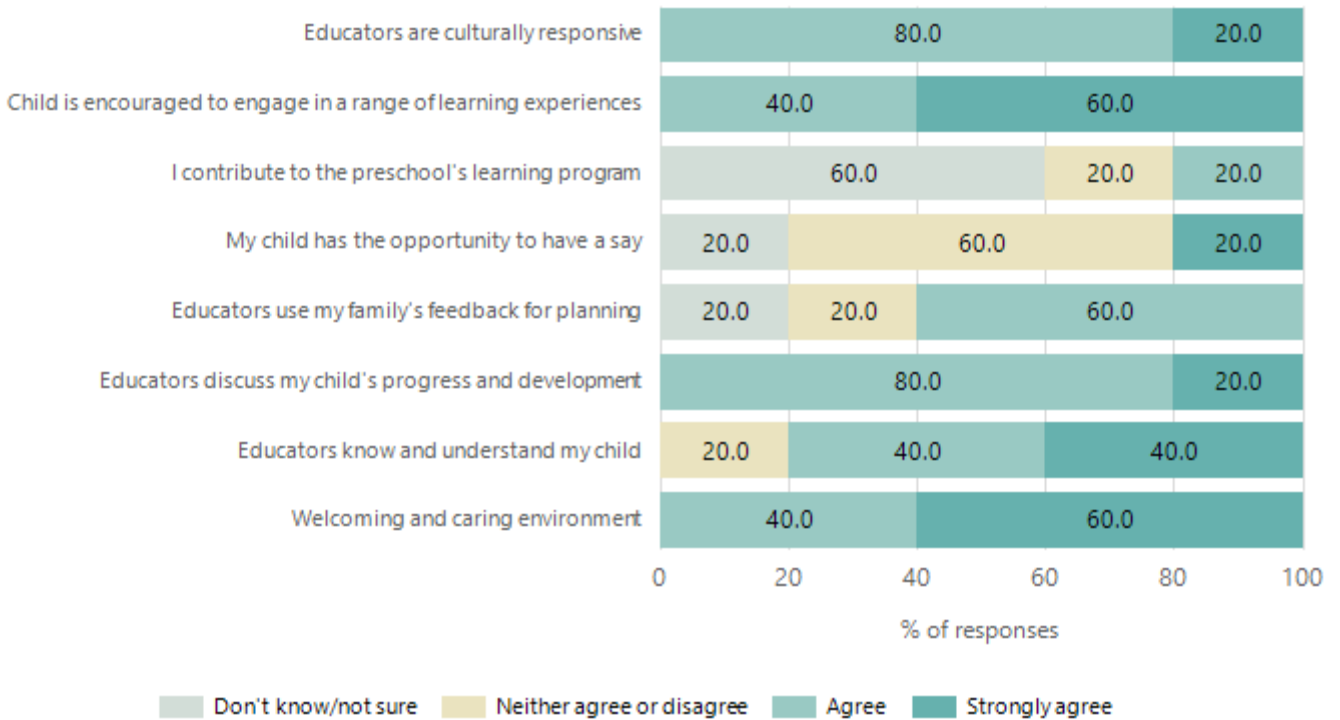
Preschool Family Opinion Survey

Governance, Leadership and Management



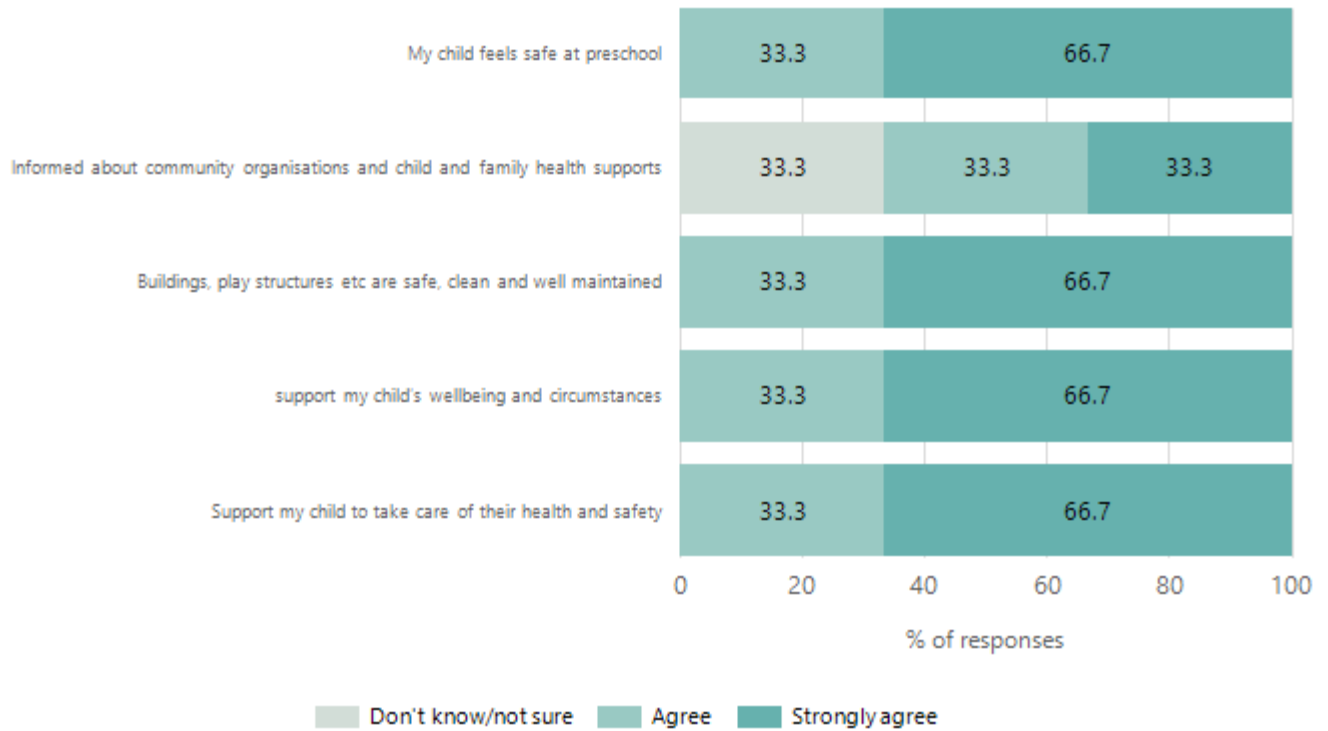
Data Source: 2025 Department for Education Preschool Family Opinions Survey, Term 3 2025.

Quality of Teaching and Learning



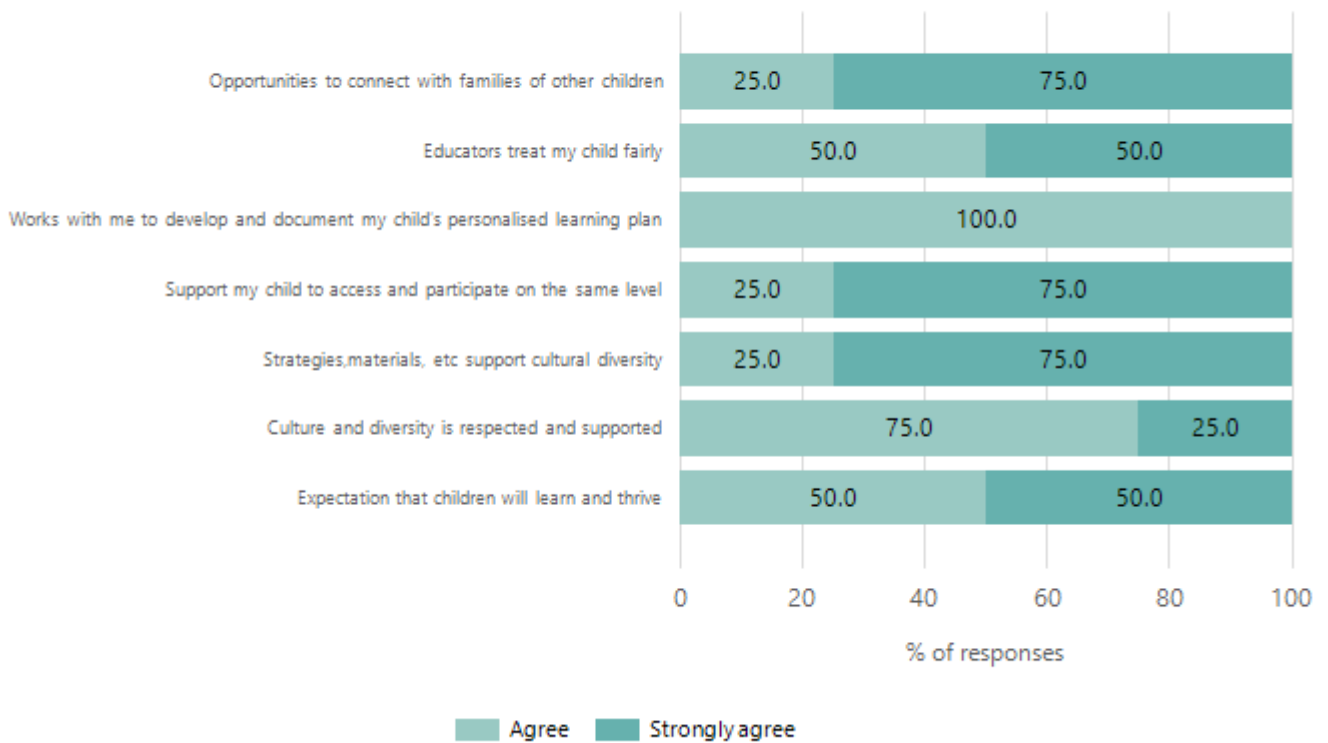
Data Source: 2025 Department for Education Preschool Family Opinions Survey, Term 3 2025.

Safety, Health and Wellbeing



Data Source: 2025 Department for Education Preschool Family Opinions Survey, Term 3 2025.

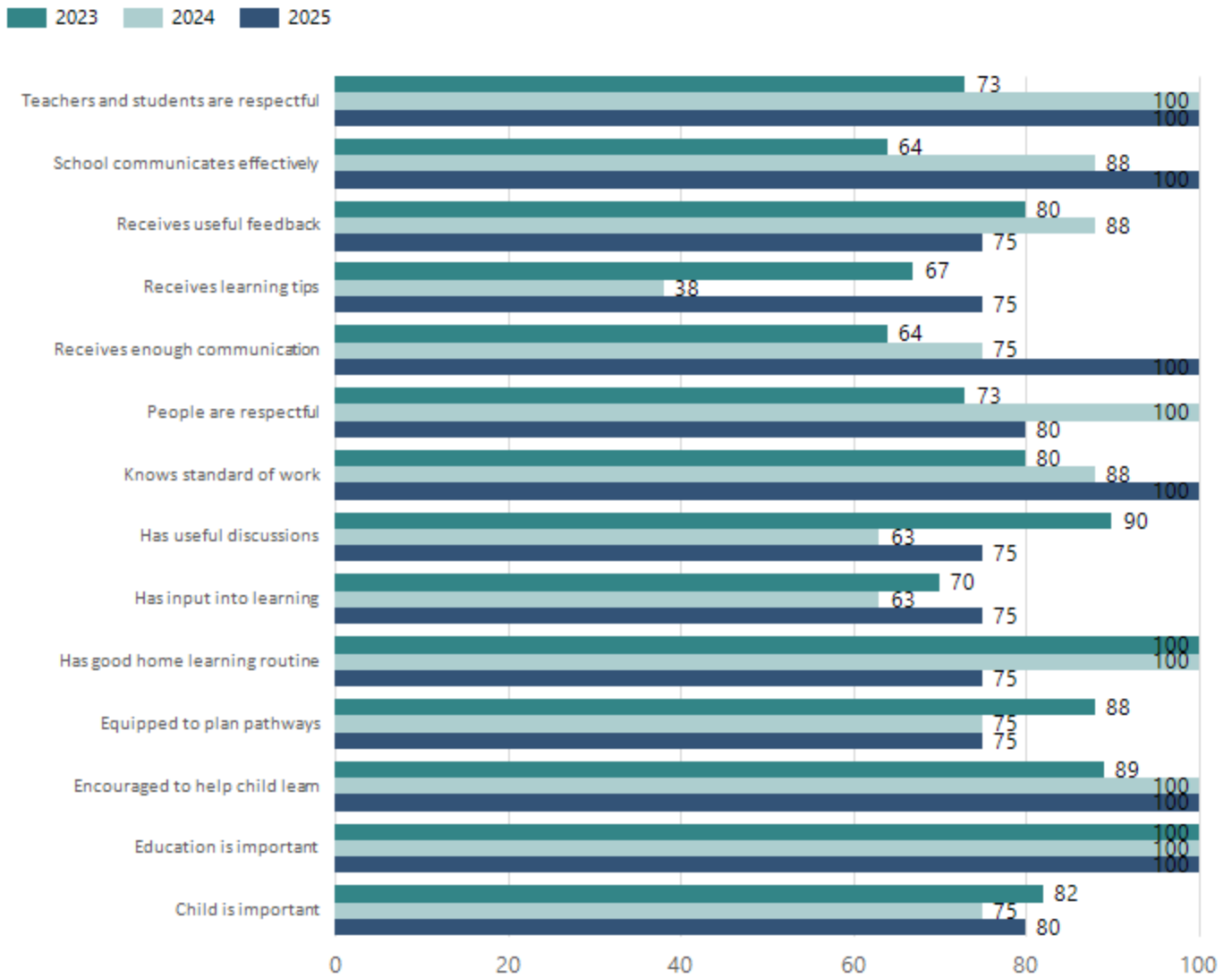
Support and Inclusion



Data Source: 2025 Department for Education Preschool Family Opinions Survey, Term 3 2025.

School Parent Opinion Survey Results

Proportion of agree/strongly agree response(%)



Data Source: 2025 Department for Education Parent Opinions Survey, Term 3 2025.

Destination Schools

| Feeder Schools (Site number - Name) | 2023 | 2024 | 2025 |
|---|-------|-------|-------|
| 0702 - Bute Early Learning and Primary School | 77.8% | 77.8% | 18.2% |
| 0778 - Kadina Memorial School | | 11.1% | |
| 9999 - Unknown | 22.2% | 11.1% | 81.8% |

Note: The data is collected in term 3. It does not reflect actual schools enrolled in by existing preschool children. A blank cell indicates there was no data for students enrolled.

Data Source: Department for Education Destination Data Report, 2025.

Intended Destination

| Leave Reason | Number | % |
|-----------------|--------|--------|
| IS - INTERSTATE | 4 | 100.0% |

Data Source: Department for Education Destination Data Report, 2025. Data extract term 3 2025. Data shows recorded destinations for students that left the school in the previous year. Data is uploaded by schools in term 3 and may not reflect final or total figures at time of report creation.

Highest Qualifications held by the teaching workforce and workforce composition

All teachers at this school are qualified and registered with the SA Teachers Registration Board.

| Qualification Level | Number of Qualifications |
|--------------------------------|--------------------------|
| Bachelor's degrees or Diplomas | 2 |
| Postgraduate Qualifications | 4 |

Data Source: Data extracted from Mandatory Workforce Information Collections as on the last pay date of June 2025. As self-reported by staff in the system.

Please note: Data includes staff who are Actively employed and on extended paid leave. Please note only the highest qualification of the Teaching staff is reported. Excludes any number of other certifications earned.

Workforce composition including indigenous staff

| | Teaching Staff | | Non-Teaching Staff | |
|-----------------------|----------------|----------------|--------------------|----------------|
| | Indigenous | Non-Indigenous | Indigenous | Non-Indigenous |
| Full-Time Equivalents | 0.0 | 4.4 | 0.0 | 8.4 |
| Persons | 0.0 | 6.0 | 0.0 | 13.0 |

Data Source: Data extracted from Mandatory Workforce Information Collection as on the last pay date of June 2025.

Please note: Data includes staff who are actively employed and on extended paid leave. "Indigenous category" is self-reported by staff in the system.

Financial Statement

| Funding Source | Amount |
|----------------------|----------------|
| Grants: State | \$1,536,456.00 |
| Grants: Commonwealth | 0 |
| Parent Contributions | \$8400 |
| Fund Raising | \$5863.15 |
| Other | 0 |

Data Source: School supplied data.