



Bute Early Learning & Primary School

Growth Respect Integrity Teamwork

Week 4 Term 1 2026

Diary Dates

Week 5

24/2 NAPLAN practice test
Years 3 & 5

25/2 Family Welcome Night
& Mini Book Fair
*See flyer attached

Week 6

6/3 Sports Day at PBAS

Week 7

9/3 Public Holiday

10/3 Student Free Day

Reminders

- Students are not to be on site until 8.30am. There is no supervision until then.
- **Breakfast Club** is held daily.
- **Newsletters** will be fortnightly.
- We are a **NUT FREE** school.
- Students are required to wear **broad brimmed** when the UV rating is 3 & above.



Contact us

PH: 8826 2060

SMS: 0417 841 481

dl.0702.info@schools.sa.edu.au

Meet Our New Receptionists



Alice, Isabelle, Charlotte, Willa, Nina, Jana & Leo

We're so excited to welcome five new children, along with two familiar faces, to our Reception class this year!

We know you'll make lots of new friends, discover amazing things, and have plenty of fun along the way.

We look forward to watching you all learn and grow together!

Meet Miss Hook

We have officially welcomed Miss Hook to the BELPS team! You will see Miss Hook teaching Tuesday to Friday. She will be teaching with Mrs Sawyer in Middle Primary and will have some time in the Preschool too. Welcome Miss Hook!



ClassDojo





FROM THE PRINCIPAL'S DESK

WELCOME TO THE 2026 SCHOOL YEAR

Welcome back to another exciting year at Bute!

True to Bute form, we've launched into the term with energy, enthusiasm and purpose. The first few weeks have been centred on strengthening relationships, nurturing connections and ensuring every child feels a genuine sense of belonging across our school and ELC. It has been wonderful to see classrooms buzzing and smiling faces settling back into routines.

Our learning environments are once again looking fantastic. Each year, we invest in an "Inspiring Spaces" budget to enhance every area across our site, ensuring our spaces remain engaging, welcoming and supportive of high-quality teaching and learning. In 2026, we have expanded this initiative to include a dedicated focus on Wellbeing. This addition has sparked thoughtful conversations and creative collaboration between students and educators, resulting in new spaces, resources and practices designed to strengthen the wellbeing of everyone who learns and works within them. The ideas have been innovative, purposeful and truly student-informed. We are so excited to showcase these BUTE-iful environments with our families in the coming weeks!

The Bute Way

At Bute, we continue to prioritise a strong, positive culture grounded in our values and guided by our motto. Supporting our young people to meet high expectations means intentionally teaching and reinforcing positive behaviours – what we proudly call The Bute Way. Through consistent language, clear expectations and strong relationships, we empower our students to be respectful, responsible and ready to learn.

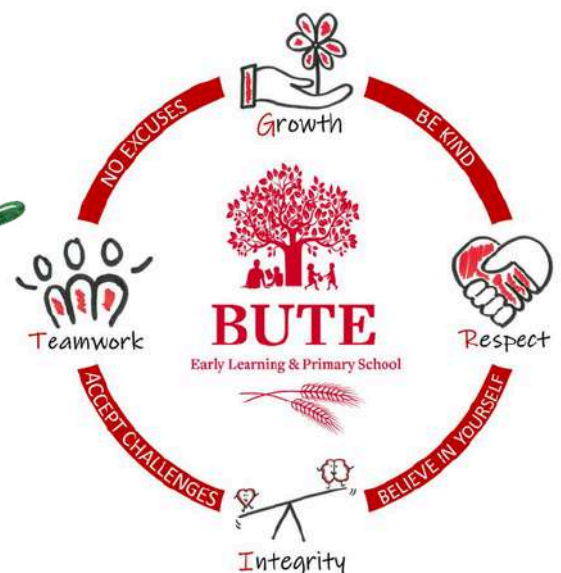
It's shaping up to be another fantastic year at Bute, and we look forward to partnering with our families as the journey continues.

Be Kind

Believe in Yourself

Accept Challenges

No Excuses





GROWTH MINDSET

At Bute Early Learning and Primary School, we encourage a Growth Mindset in our students. Growth mindset is a scientific theory that suggests that one's intelligence can be grown or developed with persistence and hard work. What it boils down to is, that we encourage our students to make mistakes and learn from them. We promote students to keep trying when the work seems too challenging, thus creating an "I can do this" attitude. This also helps to develop their resilience to keep persevering even when things seem challenging. You may hear a teacher praising a student for their effort, patience, and practice instead of how smart they are or the finished outcome. We say that failing is just another word for growing.

The Learning Pit + Growth Mindset

The Learning Pit shows students that struggle is a normal part of learning, while a Growth Mindset gives them the belief and strategies to persist through it. Together, they help students see challenge as productive, effort as valuable, and mistakes as steps toward deeper understanding.



Everything is hard
before it's easy

Goethe J.W

GROWTH MINDSET

The driver behind a learner's motivation and achievement

FIXED MINDSET

GROWTH MINDSET

I already know it all

I want to learn

I give up easily

I welcome and learn from feedback

I ignore useful feedback

I learn from others

I can't change how smart I was born

I can train my brain

I don't need to practice

I can work hard to get better at something

I'll never be good at this

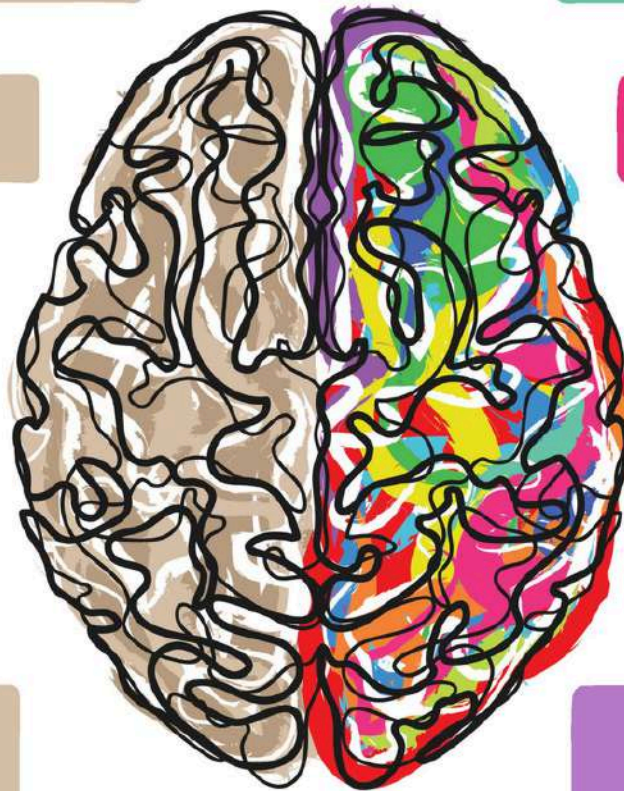
I will keep trying

Mistakes are bad so I avoid them

Mistakes are learning opportunities

I avoid things that require effort

I want to be challenged



SPORTS DAY - FRIDAY, 6TH OF MARCH

Sports Day is fast approaching and will be held on Friday, 6th of March. Our Sports Day team will again compete against Port Broughton and Snowtown at Port Broughton Area School. If the forecast is for 37 degrees or over, the event will be postponed with the rescheduled date advised if needed. Families will continue to receive information over the coming weeks regarding the details for the day, requirements etc. Students are nearing commencement of event practices to ensure they are able to have maximum participation and enjoyment on the day. I have no doubt this will again be a fantastic event and our students will make us all proud. GO BUTE!



STUDENT FREE DAY & PUBLIC HOLIDAY

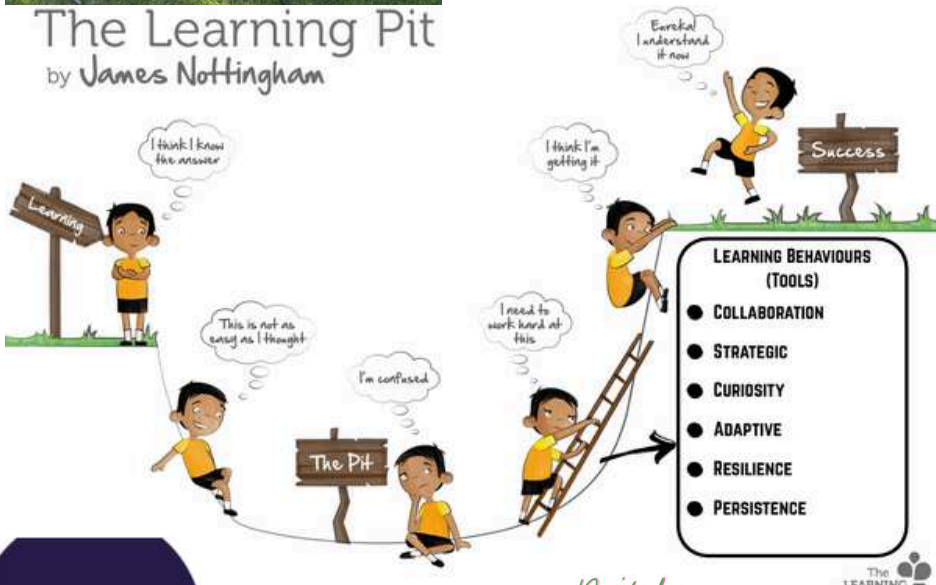
Our first Student Free Day for 2026 will be held on Tuesday, 10th of March following the Public Holiday on Monday, 9th of March (Adelaide Cup). We have aligned our Student Free Day with Kadina Memorial School to support families with children attending both sites. The Student Free will be used for staff professional development. On this particular day, staff will engage in training in relation Restorative Practices linked to our partnership with “Real Schools”.





JUNIOR PRIMARY

The Learning Pit
by James Nottingham



You don't have to FEAR the pit, be brave and keep persisting.

Don't be DISGUSTED if it takes time to work out the answers.

BY NOW YOU MAY HAVE HEARD ABOUT THE 'LEARNING PIT', DEVELOPED BY JAMES NOTTINGHAM. IT IS A CONCEPT THAT HELPS LEARNERS UNDERSTAND THE CHALLENGES AND REWARDS OF LEARNING. WHEN CHILDREN ENCOUNTER SOMETHING NEW OR DIFFICULT, THEY MAY FEEL UNCERTAIN OR EVEN FRUSTRATED — THIS IS WHEN THEY ARE IN THE 'PIT.' THE JP CLASS ARE USING THE CHARACTERS FROM THE FILM 'INSIDE OUT', TO HELP LEARNERS IDENTIFY AND EXPRESS THEIR EMOTIONS DURING THESE TIMES. FOR EXAMPLE, THEY MIGHT FEEL JOY WHEN THEY SUCCEED, SADNESS IF SOMETHING IS HARD, OR DISGUST IF THINGS SEEM UNFAIR. BY RECOGNISING THESE FEELINGS, LEARNERS DEVELOP RESILIENCE AND UNDERSTAND THAT ALL EMOTIONS PLAY A VALUABLE ROLE IN LEARNING. WITH SUPPORT AND PERSEVERANCE, THEY CAN CLIMB OUT OF THE PIT, STRONGER AND MORE CONFIDENT IN THEIR ABILITIES.

YOU WILL FEEL JOY AND PRIDE WHEN YOU ARE OUT OF THE PIT AND SUCCEED OR MAKE PROGRESS!



DON'T GET ANGRY. A CHALLENGE MEANS YOU ARE LEARNING. ACCEPT THE CHALLENGE.



DON'T BE SAD, MISTAKES HELP US GROW, IMPROVE AND BECOME RESILIENT.



JUNIOR PRIMARY

DON'T STOP
UNTIL YOU
ARE PROUD



GROWTH MINDSET

- M** MISTAKES HELP ME LEARN.
- I** IMPROVEMENT MEANS A LITTLE BETTER EACH DAY.
- N** NOT GIVING UP WILL HELP ME GET BETTER.
- D** DETERMINATION WILL HELP ME IMPROVE MY SKILLS.
- S** SUCCESS WILL COME IF I WORK HARD.
- E** EMBRACING CHALLENGES WILL LEAD ME TO GROW.
- T** THINGS ARE DIFFICULT BEFORE THEY ARE EASY.

WE HELP LEARNERS UNDERSTAND THE DIFFERENCE BETWEEN A GROWTH MINDSET AND A FIXED MINDSET. A GROWTH MINDSET MEANS BELIEVING THAT YOUR ABILITIES CAN IMPROVE THROUGH EFFORT, PRACTICE, AND LEARNING FROM MISTAKES. FOR EXAMPLE, IF A CHILD FINDS SOMETHING HARD, THEY KNOW THAT WITH TIME AND PERSEVERANCE, THEY CAN GET BETTER. IN CONTRAST, A FIXED MINDSET IS WHEN SOMEONE BELIEVES THEIR SKILLS OR INTELLIGENCE ARE SET AND CANNOT CHANGE, SO THEY MIGHT GIVE UP EASILY OR AVOID CHALLENGES. BY ENCOURAGING A GROWTH MINDSET, WE SUPPORT LEARNERS TO KEEP TRYING, EMBRACE CHALLENGES AND BE PROUD OF THEIR PROGRESS AND ACHIEVEMENTS—HELPING THEM BECOME CONFIDENT, RESILIENT LEARNERS.

YOU CAN
DO HARD
THINGS



IT MAY NOT BE
EASY
BUT IT WILL BE
WORTH IT



MISTAKES
HELP YOU
GROW



PROGRESS
OVER
PERFECTION





JUNIOR PRIMARY



*The JP class
as YETI'S.
They will
move
through the
Learning Pit!*

They Power of YET!

Yeti Power: I might not be able to do it yet, but I am learning!



Y- You can learn new things with practice.

E- Effort helps your brain grow.

T- Trying again helps you improve.



Remember, I can't do it yet, but I will keep trying until I succeed!

WE ENCOURAGE OUR LEARNERS TO USE THE 'POWER OF YET' AND DEVELOP A GROWTH MINDSET DURING THEIR LEARNING. WHEN A TASK FEELS TRICKY OR THEY HAVEN'T MASTERED SOMETHING—LIKE READING A NEW WORD OR SOLVING A MATHS PROBLEM—WE REMIND THEM TO SAY, "I CAN'T DO THIS...YET!" THIS SMALL WORD HELPS CHILDREN REMEMBER THAT LEARNING IS A JOURNEY, AND WITH EFFORT AND PERSEVERANCE, THEY WILL IMPROVE.

THIS APPROACH FITS PERFECTLY WITH THE 'LEARNING PIT', WHERE LEARNERS MAY FEEL CHALLENGED OR UNSURE AT FIRST, BUT WITH A GROWTH MINDSET AND THE POWER OF YET, THEY CAN KEEP TRYING, GROW IN CONFIDENCE, AND CELEBRATE THEIR PROGRESS AS THEY CLIMB OUT OF THE LEARNING PIT.



RURAL CARE & PRESCHOOL

Our 2026 **Quality** Improvement focus

Our Quality Improvement Plan (QIP) outlines the areas we are continually reflecting on and seeking to improve as a part of our commitment to high-quality early learning and care. It is a living document, which is constantly adjusted and built upon as the year progresses and lived experiences are shared. Below are the details about our 2026 QIP;

Goal

To develop children's awareness and understanding of Aboriginal cultures, histories, practices and languages.

Challenge of Practice

If educators meaningfully embed Aboriginal cultures, histories, practices and languages throughout the environment and learning experiences, then children will develop a greater awareness and knowledge in this area of their learning.

Actions (What educators are focusing on)

- Educators will collaborate on the Self-assessment tool within the Narragunnawali platform to help determine “actions” for our Reconciliation Action Plan.
- Educators will continue to develop their own understanding of Aboriginal cultures, histories, practices & languages, through ongoing professional learning.
- Educators will use Pedagogical Documentation as a form of formative assessment, to inform the next learning and developmental steps for children.
- Educators will use the DfE Culturally Responsive Framework, including the “yarning cards” to engage in meaningful dialogue
- Educators will critically reflect on current practices, structures, routines and the environment to determine how they do or don't support a Culturally safe and aware environment.

Success Criteria (How we will know if our actions are having an impact)

- Aboriginal cultures, histories, practices and languages will be visible within the learning environment.
- Aboriginal cultures, histories, practices and languages will be visible within the learning program.
- Children will articulate a greater understanding of Aboriginal cultures, histories, practices and languages through structured and unstructured play and experiences.



RURAL CARE

We have welcomed a few new children who are finding their feet really well within Rural Care! All children have been so welcoming of new faces, helping create a fun and inviting environment for all to enjoy.

The children have had their imagination and creativity running wild since returning these last few weeks. They have been busy creating sun catchers, having fashion parades and creating endless ideas with play dough.

Our Learning so far:

With the warm weather still upon us, our days have consisted of water play left, right and center. What better way to keep our bodies cool, as well as form friendships, negotiate through the use of language, problem solve and most importantly, have fun!!!



In the coming weeks we encourage the children to help us expand on our Aboriginal and Torres Strait Islander display within the environment. Through the use of painting, gathering natural materials and resembling symbols through playdough, sandpit play as well as drawing. We look forward to extending upon our cultural resources as well as our knowledge as Educators to further educate the children.



RURAL CARE – OSHC



OSHC has come back in full swing, with children expressing thoughts and ideas on what can be set up within the environment to make their OSHC experience as fun as it can be! So much creativity has occurred through child led play. Listening to children's voices has given us great insight into each child's interests, allowing us to create a calming and engaging space after School/Kindy.



RURAL CARE – REMINDERS

Reminders:

- Please ensure your child is provided with a hat for outside play.
- Sunscreen is also to be provided if required for your individual child (we provide generic sunscreen)
- Provide a change of spare clothes for messy play.
- If not yet completed, please fill out your child's 'collaborative learning goal' form and return to an Educator.
- Contact us on 0427 706 229 or 8826 2230 for enquiries or to let us know when your child is absent from care.



We ask that you follow these simple guidelines to comply with site policies and procedures

We are a nut free centre.

\$2 donation on arrival.

Sign in/out using visitors book.

Keep kitchen bench tops clear of bags and personal belongings.

Keep bags and personal belongings out of reach of children

Tea and Coffee available – travel mugs are available if hot drinks leave the kitchen.

please tidy up after yourself and your child/children.

children NOT permitted in the kitchen – please keep door closed at all times.

children must be seated while eating.

keep major walkways clear for easy access.

please clean change table using future disinfectant spray after use.



Playgroup is held every Monday from 9:30am-11:00am at the Bute Early Learning centre.

All families are welcome to come along and join! Play group is such a great way to connect with families within our community and beyond. it is also the perfect opportunity for your child/s to engage in meaningful experiences, and socialise with peers.



BUTE
PLAYGROUP

Swimming Week



Name: _____ Date: _____



Beach Word Scramble



The letters of the words below are jumbled. Unscramble the letters and write the word on the blank line provided.

- | | |
|------------------|-------------------|
| 1. LOHSVE _____ | 13. FIUSGRN _____ |
| 2. NFU _____ | 14. IEFBERS _____ |
| 3. ESWADEE _____ | 15. MESRUM _____ |
| 4. DETI _____ | 16. EANOC _____ |
| 5. DEAW _____ | 17. WIMS _____ |
| 6. VSAWE _____ | 18. HASPSL _____ |
| 7. GDI _____ | 19. OTH _____ |
| 8. TKEBUC _____ | 20. USTI _____ |
| 9. WELTO _____ | 21. STLAEC _____ |
| 10. ENDU _____ | 22. ATFYF _____ |
| 11. LOERXP _____ | 23. LSHEL _____ |
| 12. BARC _____ | 24. NNUYS _____ |



bucket
castle
crab
dig
dune
explore



Frisbee
fun
hot
ocean
seaweed
shell

shovel
splash
suit
summer
sunny
surfing



swim
taffy
tide
towel
wade
waves

© Classroom Star

Can you spot
the
10 differences?



School Fees

If you require assistance with a School Card Application or would like to discuss your school fees, please call Steph on 8820 2060.

School and Kindy fee notices have now been issued. These fees cover essential materials and services charges that support your child's learning.

For 2026, the South Australian Government has confirmed a \$200 rebate per student. This rebate will be automatically applied to your school invoice, helping to reduce the amount payable.

Families may also be eligible for School Card assistance.

Applications can be completed online via:

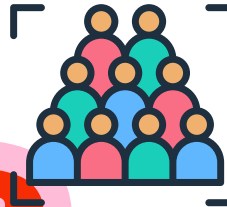
<https://www.sa.gov.au/topics/education-and-learning/financial-help-scholarships-and-grants/school-card-scheme>



Thank you!



School Photos



Upcoming.....

Wednesday 8th April

Week 11

MORE INFO TO COME

SCHOOL & COMMUNITY NOTICES

You're invited to our SCHOLASTIC **Book Fair**

Once again this year, we're excited to host our Welcome Night Mini Book Fair!

Hop into our Library to browse a wonderful range of books, stationery, posters, and more! You might even spot the perfect little Easter basket filler, with Easter just around the corner

Every purchase earns our school a commission, which we use to buy even more books for our school Library. So you're not just shopping — you're helping our whole school grow a love of reading!

We'd love to see you there!

Please note **Cash or online payments available at the Fair, sorry no Eftpos!*



LUNCH ORDERS

We're excited to let you know that our lunch ordering system is changing as of Week 5!

Menus will be sent home with students, and lunch orders will now be placed directly with Bute Cafe 21 by calling 0449 991 159 before 10:30am on the day of order.

Lunch orders will be available Wednesday to Friday, with a fun 'red food' option on Fridays.

Thank you for your support as we introduce this new and improved system!

SCHOOL & COMMUNITY NOTICES



SIES

Inclusive Teaching & Learning



Government of South Australia
Department for Education

SAVE THE DATES 2026 SIES REGIONAL CONNECT!

TERM 1, WEEK 5, 2026: THURSDAY 26TH FEBRUARY
TERM 2, WEEK 5, 2026: THURSDAY 28TH MAY
TERM 3, WEEK 5, 2026: THURSDAY 20TH AUGUST
TERM 4, WEEK 5, 2026: THURSDAY 12TH NOVEMBER

Join us via Microsoft Teams for The Statewide Inclusive Education Services (SIES) termly Regional Connect information sessions

If you're a **parent, carer or educator** of a student with disability or difficulty at a DfE School, you are invited to these sessions where SIES staff will be available to discuss resources and supports.

More information to follow regarding subjects, times and registrations.



Next one Thur 26th Feb 2026



TIME TO BE CONFIRMED



Registrations to follow



8235 2871

sies.admin@schools.sa.edu.au

www.SIES.sa.edu.au



Why MyTime?

MyTime is for parents and carers of a child with a disability, chronic medical condition or other additional needs including developmental delay.

Unwind and share experiences with others who understand

FIND US AT:

Kadina Uniting Church Hall
Thursdays 9:30am – 11:30am
6 sessions per school term
(dates on next page)

CONTACT:

Facilitator: 0466 427 633

Email: Health.WCHNMyTime@sa.gov.au

Website Enquiry: mytime.net.au



Health
Women's and Children's
Health Network



mytime.net.au

Fun Fact

It's impossible to sneeze with your eyes open!

Do you have a fun fact or joke you'd like to put in the newsletter? Write it down with your name and pop it into the box at the office

MyTime term plan

mytime.net.au



Health
Women's and Children's
Health Network

| DATES | GROUP ACTIVITY | CHILDREN'S ACTIVITY |
|-----------------------|--|---|
| (School week) | | |
| 5/2/2026 (Week 2) | Coffee and Chat: Welcome to Term 1 | |
| 12/2/2026 (Week 3) | Boardgames | |
| 19/2/2026 (Week 4) | Guest Speaker: Carers & Disability Link | Children's activities are planned according to the age and needs of children booked in with the Play Helper. Some activities include puzzles, vehicles, blocks, balls, drawing and other games. |
| (Week 5) | (No MyTime this week) | |
| 5/3/2026 (Week 6) | Craft Time: Supplies provided | |
| 12/3/2026 (Week 7) | Self Care Session: TBC | |
| 19/3/2026 (Week 8) | End of Term Celebration | |

*New members. NB: dates and group activities are subject to change. Please enquire with MyTime Facilitator to register/attend



It's support for you



It's free to join



Professional support



Pre-school aged children are welcome



BUTE

Early Learning & Primary School



BELPS

FAMILY WELCOME NIGHT

(SCHOOL, PRESCHOOL AND RURAL CARE)

25/2 +++ 4:30PM

GAGABALL GAMES

STAFF MEET N GREET

MINI BOOK FAIR

FREE SAUSAGE SIZZLE



Scholastic Book Fair



To continue promoting our focus and culture on reading, we will be hosting a mini-Scholastic Book Fair during the Welcome Night. We will have the larger Book Fair later in the year as per usual, however, this smaller fair will allow families to kick start the year with some fresh reading material...great for those home reading minutes! The Book Fair will be open from 4:30pm – 5:30pm in the Library.

Bute Early Learning & Primary School invites all of our wonderful families to attend our Welcome Night for 2026. This will allow families to explore all learning environments including our wonderful Early Learning Centre facilities, and meet n greet the BUTEiful staff. Classrooms and the Early Learning Centre will be open from 5:00pm until 6:00pm, followed by a BBQ from 5:45pm.